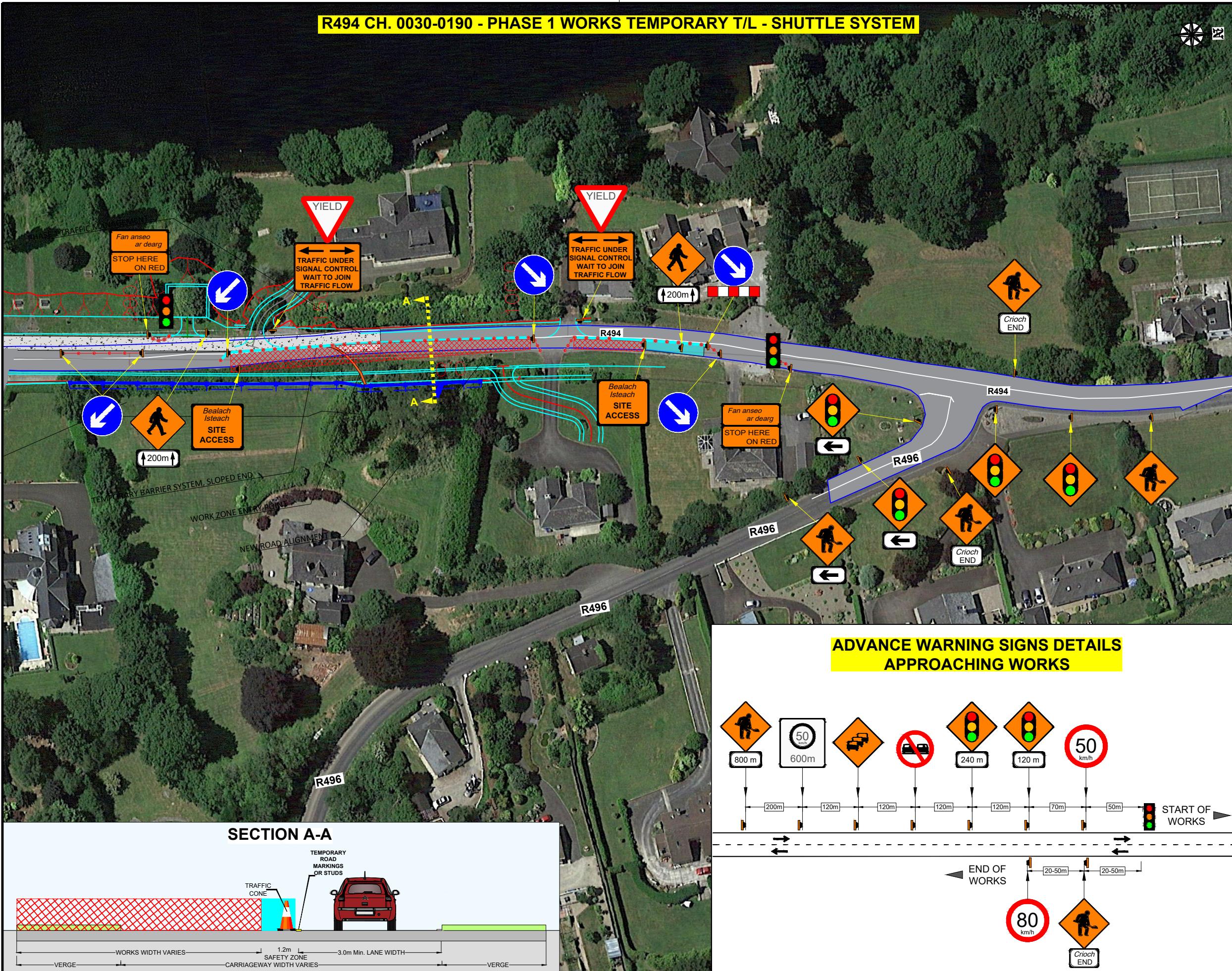
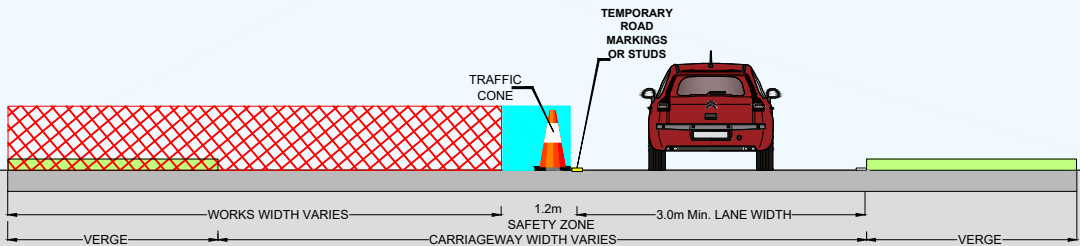


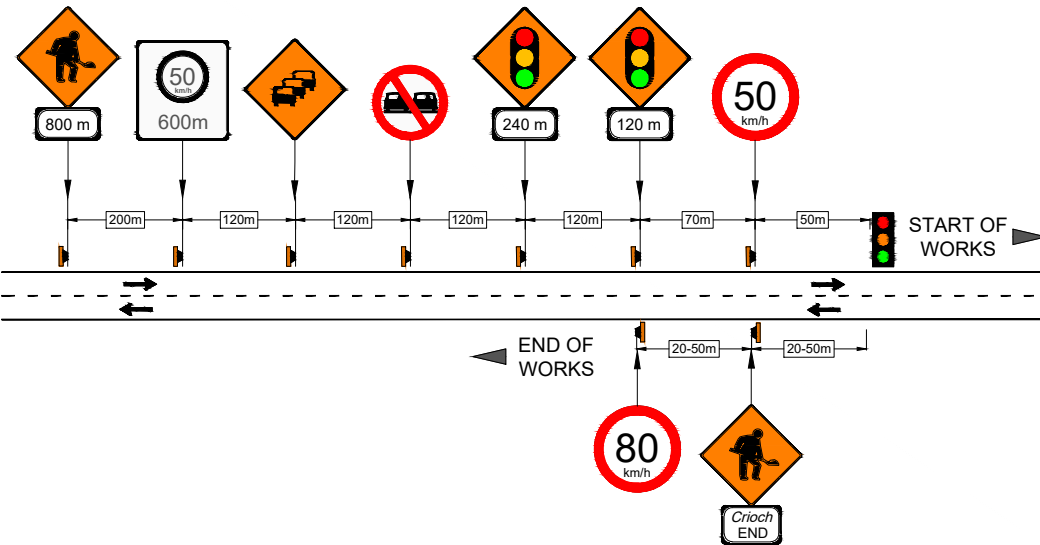
R494 CH. 0030-0190 - PHASE 1 WORKS TEMPORARY T/L - SHUTTLE SYSTEM



SECTION A-A



ADVANCE WARNING SIGNS DETAILS  
APPROACHING WORKS



DESIGN PARAMETERS

CHAPTER 8 ROAD LEVEL:	2(I) / 1 (III)
SPEED LIMIT:	80/50km/h
ROADWORKS TYPE:	A
NUMBER OF SIGNS:	4
SIGN VISIBILITY:	90m
DISTANCE BETWEEN SIGNS:	120m
SIGNS SIZE RECTANGULAR - MIN.:	600mm
SIGNS SIZE CIRCULAR - MIN.:	750mm
CONE HEIGHT - MIN.:	750mm
TAPER CONE SPACING:	3m
LONGITUDINAL CONE SPACING:	12m
RATE OF TAPER: LANE - 1 IN 40m 45°; HS - 1 IN 40m	
SAFETY ZONE: LONGITUDINAL - 45m; LATERAL 1.2m	
CUMULATIVE AWS DISTANCE:	600m
MAXIMUM LENGTH OF SHUTTLE:	500+m
MINIMUM LANE WIDTH:	3m
TM SYSTEM:	TEMPORARY T/L - SHUTTLE SYSTEM

SITE LOCATION

